

LCD-Array Kits

- Bacteria
- Viruses
- Fungi
- Protists
- Animal Species (FOOD)
- Human Point Mutations


Analysis System

- Chip-Scanner
- Chip-Centrifuge
- SlideReader Software

Product Information

MYCO Direct 1.7
LCD-Array Kit

Suited for FFPE tissue sections as starting material.



Parallel detection of *M.tuberculosis* Complex (MTBC) and other Mycobacteria.

- Simple: PCR based macro array assay on polymer support.
- Robust: Simple, non fluorescent protocol.
- Fast: 90 minutes PCR, 45 minutes array protocol.
- Cost-efficient: Minimal instrumentation required.
- Reliable: Automatic, software assisted data read out.

Technology for your daily routine.

Product Information

KRAS 1.4
LCD-Array Kit



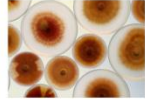
Parallel detection of 9 point mutations in codon 12 / 13 of the *kras* oncogene.

- Simple: PCR based macro array assay on polymer support.
- Robust: Simple, non fluorescent protocol.
- Fast: 90 minutes PCR, 45 minutes array protocol.
- Cost-efficient: Minimal instrumentation required.
- Reliable: Automatic, software assisted data read out.

Technology for your daily routine.

Product Information

FUNGI 2.1
LCD-Array Kit



Suited for FFPE tissue sections as starting material.

Parallel detection of *Candida*, *Aspergillus* and other fungal pathogens.

- Simple: PCR based macro array assay on polymer support.
- Robust: Simple, non fluorescent protocol.

45 minutes array protocol. Minimal instrumentation required. Automatic, software assisted data read out. Technology for your daily routine.

Product Information

BAC-Dent 2.4
LCD-Array Kit



Parallel identification of 11 bacteria associated with periodontitis.

- Simple: PCR based macro array assay on polymer support.
- Robust: Simple, non fluorescent protocol.
- Fast: 90 minutes PCR, 45 minutes array protocol.
- Cost-efficient: Minimal instrumentation required.
- Reliable: Automatic, software assisted data read out.

Technology for your daily routine.

Product Information

HPV 3.5
LCD-Array Kit

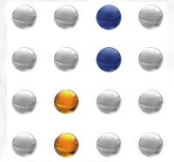


Suited for FFPE tissue sections as starting material.

Parallel detection of 32 human papilloma virus types.

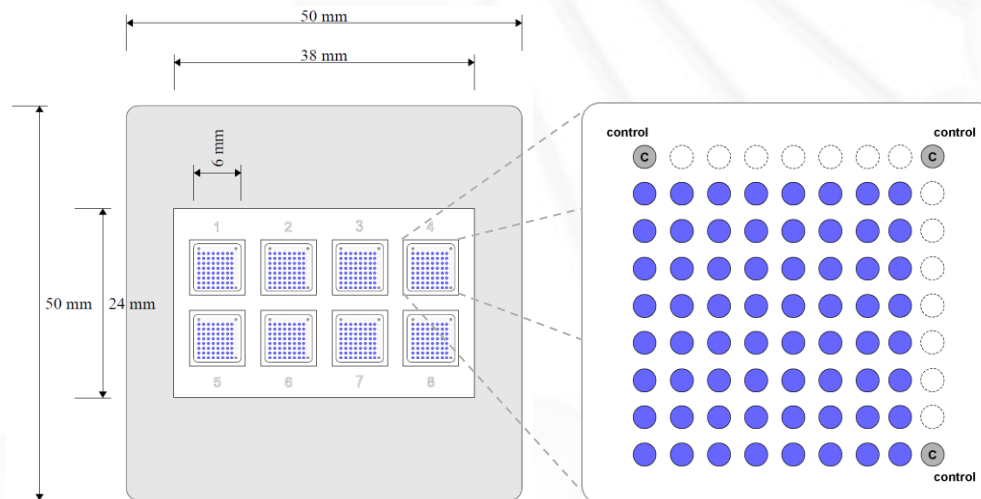
- Simple: PCR based macro array assay on polymer support.
- Robust: Simple, non fluorescent protocol.
- Fast: 120 minutes PCR, 45 minutes array protocol.
- Cost-efficient: Minimal instrumentation required.
- Reliable: Automatic, software assisted data read out.

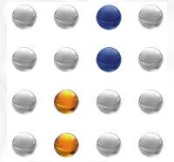
Technology for your daily routine.



LCD-Array Format

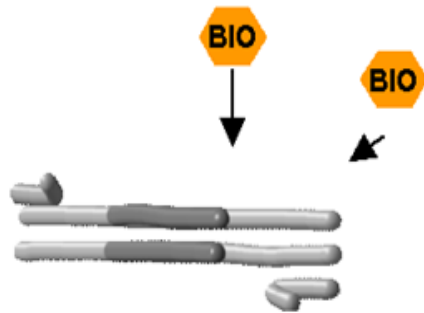
- 50 x 50 mm polymer support with 36 x 22 mm array zone [Slide-Format]
- 8 identical array fields per chip
- Up to 36 different capture probes in duplicates



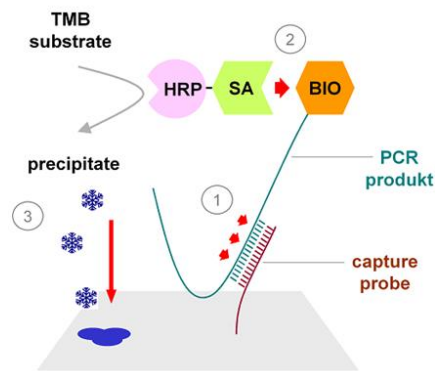


Assay Principle

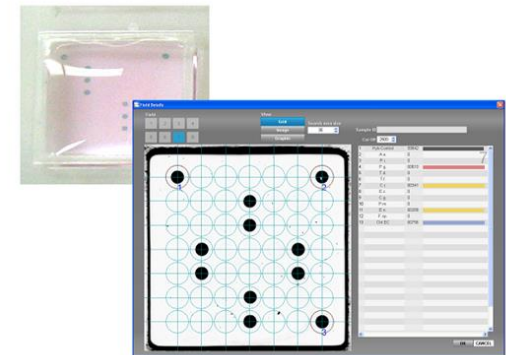
- PCR driven non fluorescent reverse hybridization platform
- single stranded capture probes immobilized on polymer supports
- detection of specific binding events via enzyme conjugate and substrate precipitation
- Scanner supported data analysis with SlideReader software



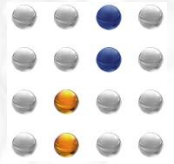
PCR with Biotin Incorporation



Hybridization & Labelling



Scanning & Analysis



LCD-Array: Work Flow

1) Mix [RT]-PCR & Hyb-Buffer



2) Apply to arrays & incubate



3) Wash



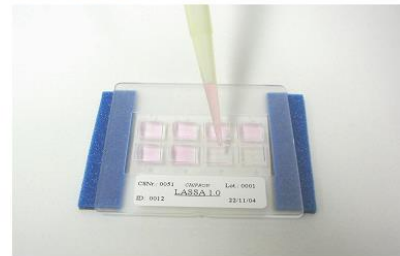
4) Apply 2nd label & incubate



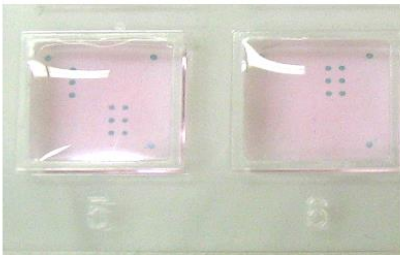
5) Wash



6) Apply stain



7) Monitor staining



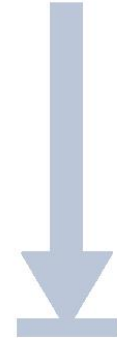
8) Scanning



9) Analysis



45
min





Human Papilloma Virus Typing

PCR: 2 Multiplex reactions to detect 32 HPV Types

LOD: 10-50 GE / reaction

Duplex hybridisation of both PCRs in one array field
software based identification of HIGH & LOW risk types

Product Information

HPV 3.5 LCD-Array Kit

Suited for FFPE tissue sections as starting material.

Parallel detection of 32 human papilloma virus types

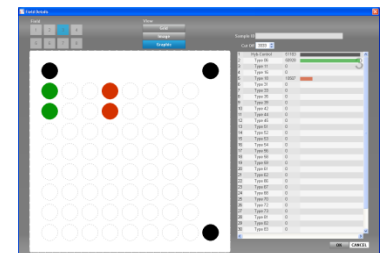
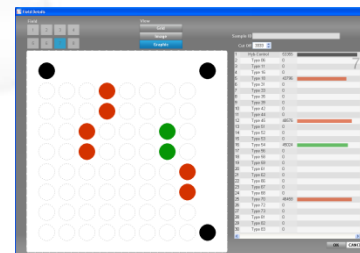
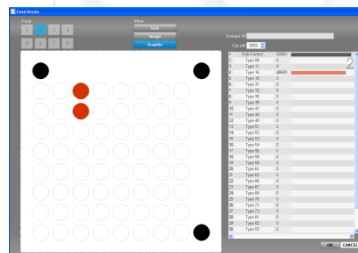
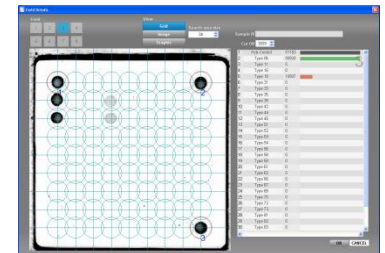
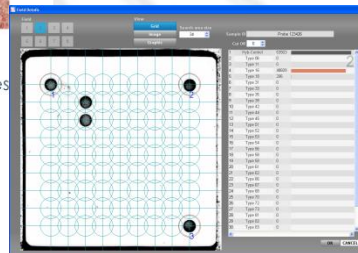
- Simple**
PCR based macro array assay on polymer supports.
- Robust**
Simple, non fluorescent protocol.
- Fast**
120 minutes PCR, 45 minutes array protocol.
- Cost-efficient**
Minimal lab instrumentation required.
- Reliable**
Automatic, software assisted data read out.

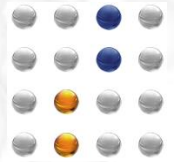
Technology for your daily routine.

Single Infection

Multiple Infection

Low concentration HIGH-Risk type in
LOW-Risk type background





Detection of MTUB-Complex & 12 Mycobacteria Other Than Tuberculosis (MOTT)

PCR: 2 independent reactions

LOD: MTUB -> 1 GE / reaction

MOTT -> 10-50 GE / reaction

Duplex hybridisation of both PCRs into one array field

Product Information

MYCO^{Direct} 1.7
LCD-Array Kit

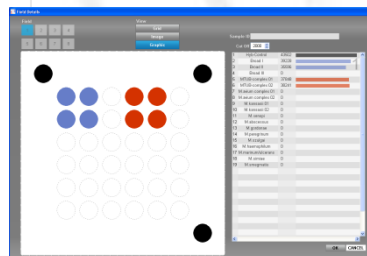
Suited for FFPE tissue sections as starting material.

Parallel detection of *M.tuberculosis* Complex (MTUB) and other *Mycobacteria* (MOT).

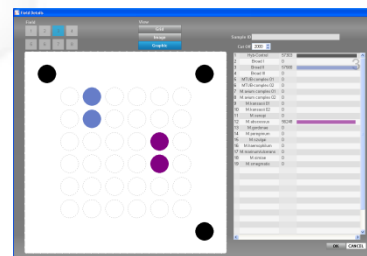
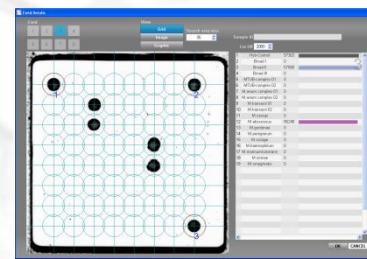
- **Simple**
PCR based macro array assay on polymer supports.
- **Robust**
Simple, non fluorescent protocol.
- **Fast**
90 minutes PCR, 45 minutes array protocol.
- **Cost-efficient**
Minimal lab instrumentation required.
- **Reliable**
Automatic, software assisted data read out.

Technology for your daily routine.

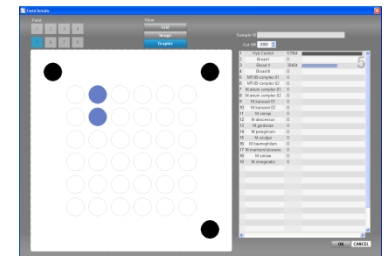
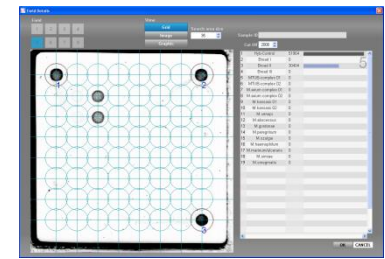
MTUB-Complex

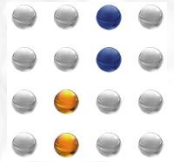


M. abscessus



Mycobacterium sp.





Fungal Pathogens

PCR: Multiplex, ITS2 Region
 LOD: 10 – 50 GE / reaction
 Specificities: 8 *Candida* species
 5 *Aspergillus* species
 & *Mucor*, *Rhizopus*, *Cryptococcus*, *Absidia*, *Scedosporium*

Product Information

FUNGI 2.1 LCD-Array Kit

Sulited for FFPE tissue sections as starting material.

Parallel detection of *Candida*, *Aspergillus* and other fungal pathogens

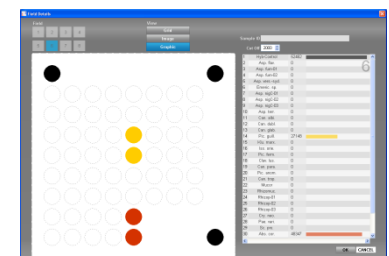
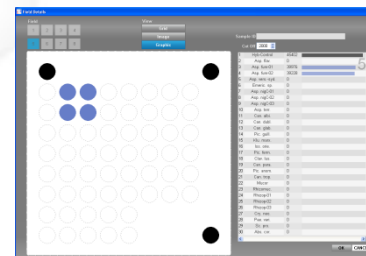
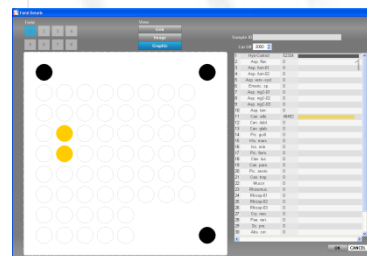
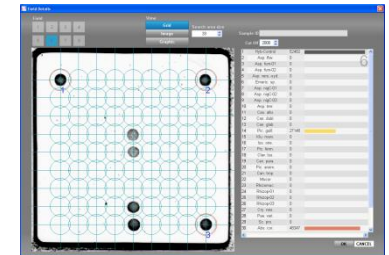
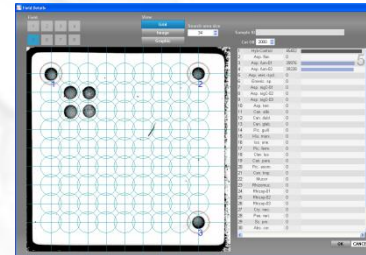
- Simple**
PCR based macro array assay on polymer supports.
- Robust**
Simple, non fluorescent protocol.
- Fast**
90 minutes PCR, 45 minutes array protocol.
- Cost-efficient**
Minimal lab instrumentation required.
- Reliable**
Automatic, software assisted data read out.

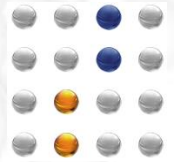
Technology for your daily routine.

C. albicans

A. fumigatus

A. corymbifera /
P. guilliermondii





Identification of bacteria associated with Periodontitis

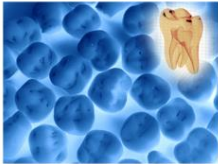
Parallel identification of 11 bacteria species/complexes within one reaction

PCR: Triplex reaction, 16S rRNA

LOD: 100 GE/reaction

Product Information

BAC-Dent 2.4 LCD-Array Kit



CE IVD

Parallel identification of 11 bacteria associated with periodontitis.

- Simple**
PCR based macro array assay on polymer supports.
- Robust**
Simple, non fluorescent protocol.
- Fast**
90 minutes PCR, 45 minutes array protocol.
- Cost-efficient**
Minimal lab instrumentation required.
- Reliable**
Automatic, software assisted data read out.

Technology for your daily routine.

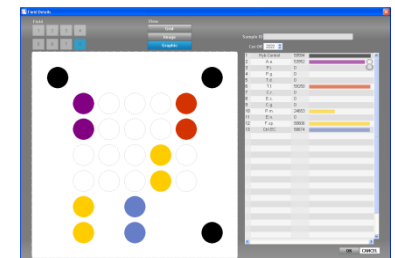
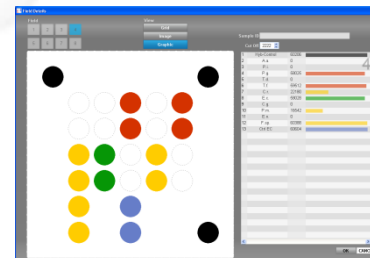
Positive Control

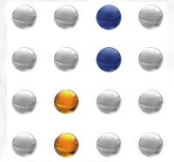


Sample A



Sample B





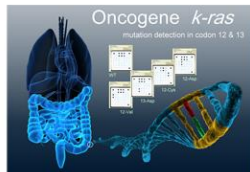
Detection of point mutations in codon 12/13 of the *kras* oncogene

PCR: 2 reactions to detect 9 point mutations

LOD: Addition of WT suppressor allows detection of < 1% mutation in WT background

Product Information

KRAS 1.4
LCD-Array Kit

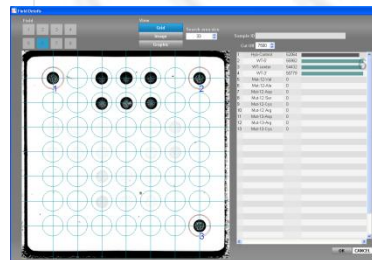


Parallel detection of 9 point mutations in codon 12 / 13 of the *kras* oncogene

- Simple
PCR based macro array assay on polymer supports.
- Robust
Simple, non fluorescent protocol.
- Fast
90 minutes PCR, 45 minutes array protocol.
- Cost-efficient
Minimal lab instrumentation required.
- Reliable
Automatic, software assisted data read out.

Technology for your daily routine.

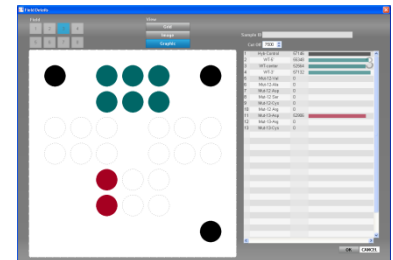
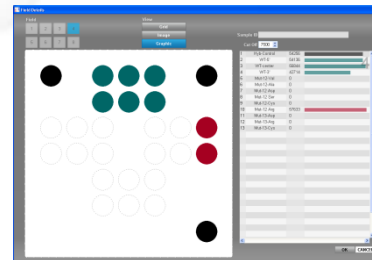
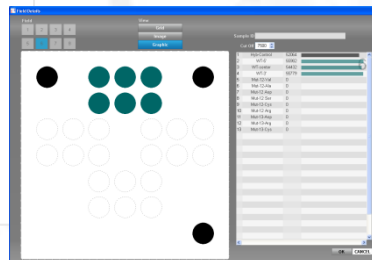
12/13 Wildtyp

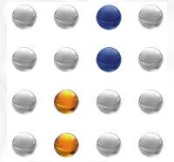


G12R [12->Arg]



G13D [13->Asp]





Detection of Animal DNA in FOOD Preparations

Product Information

MEAT 5.0 LCD-Array Kit

DNA based identification of 19 meat & 7 poultry species/genera

- Simple**
PCR based macro array assay on polymer supports.
- Robust**
Non fluorescent detection chemistry.
- Fast**
90 minutes PCR, 45 minutes array protocol.
- Cost efficient**
Minimal lab instrumentation required.
- Reliable**
Automatic, software assisted data read-out.

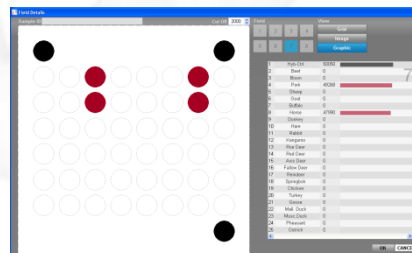
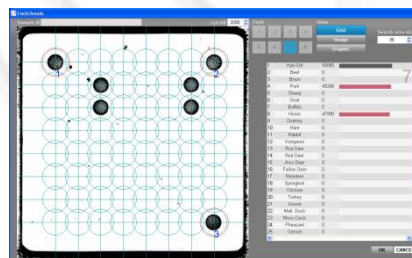
Technology for your daily routine.

PCR: 1 Multiplex PCR, 19 Meat & 7 Poultry species/genera

LOD: Additions of < 0.5 % are detected robustly

Application: Highly processed meat preparations, 'Convenience Food' and milk products

Beef Lasagne with Horse



Duck liver pie with Chicken & Goose

